

STONE

RAFFAELE LAZZARI



The Stone, designed by Raffaele Lazzari, is a multi-purpose, free-shape element manufactured in either in High Performance Concrete (HPC) or Ultra High Performance Concrete (UHPC) depending on the type of use.



MATERIALS & FINISHES

- High Performance Concrete (HPC)
 - Granite
 - White Marble
- All sides VELLUTO Finish



- Ultra High Performance Concrete (UHPC)
 - ALFA (Smooth/Polished Finish)

TREATMENTS

- Anti-Deterioration (standard)
- Anti-Graffiti for HPC & UHPC

DIMENSIONS

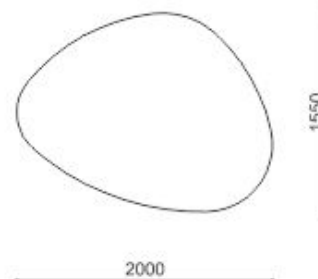
- 2000x1550mm H=515mm

ESTIMATED WEIGHT

- HPC: 3,500lb (solid)
- UHPC: 850lb (hollowed inside)

FOOTING

- Freestanding w/Pedestal "Feet"
- Inground w/Threaded Rods (upon request)



High Performance Concrete (HPC)

HPC is a mixture made of performance reinforced concrete, with the addition of granite or marble aggregates, with good technical structural performance. The aggregates are carefully selected and available in different colors (granite or white marble).

Possible surface finishes of HPC products are:

Polished surface and sides

VELLUTO surface and sides

Polished surface and VELLUTO sides

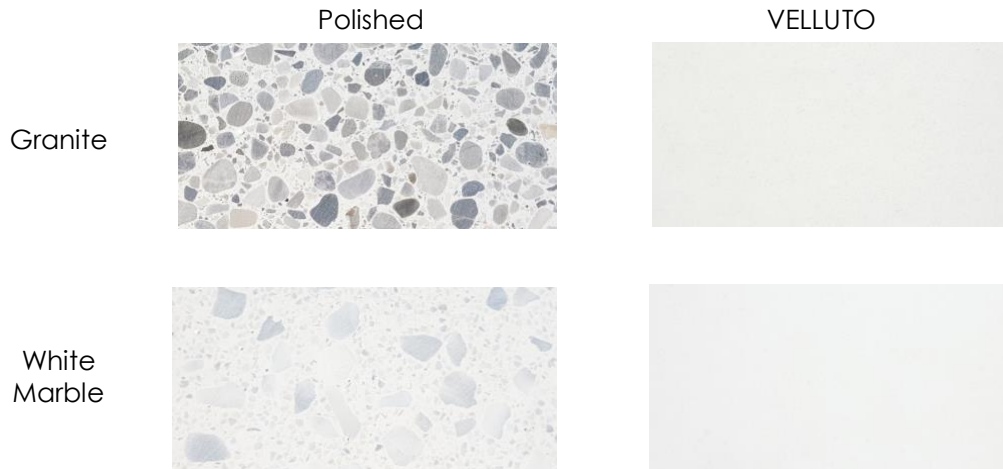
Not all products are available in all finishes. In order to check the finishing available on each product please refer to individual product data sheet for descriptions.

As a standard, the surfaces are treated with special "Anti-deterioration" products, which increase the product's life and resistance characteristics to rain erosion, mold and similar events.

On request, and at an additional cost, an "Anti-graffiti" treatment is available which permits the removal of vandalism carried out with different types of sprays and permanent markers.

Generally, HPC products come equipped with bushings embedded in the stone, suitable for eyebolts to facilitate with the handling and installation.

It is very important to follow the manufacturer's "Care and Maintenance" guide to retain your product's warranty. In case of any doubt about the proper maintenance procedure, please contact id created, Inc. for support.



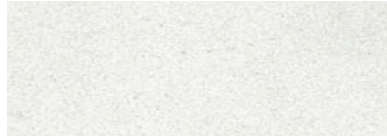
These images are merely indicative; please refer to physical sample.



Ultra High Performance Concrete (UHPC)

Metalco's innovative UHPC is a mixture of very fine (approx. 0.05mm grain size) natural mineral components (cement and granite or marble aggregates) and organic poly-vinyl alcohol (PVA) fibers (non-metallic), which ensures resistance and flexibility, and allows a smaller amount of cement to produce an item, thus obtaining some thinner profiles which frequently result in lighter weight products.

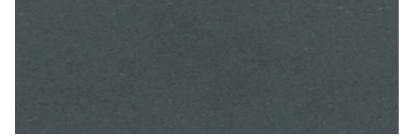
Possible ALFA surface finishes of UHPC products are:



101 B



503



105 Y

These images are merely indicative; please refer to physical sample.

Not all products are available in all finishes. In order to check the finishing available on each product, please refer to individual product data sheet for descriptions.

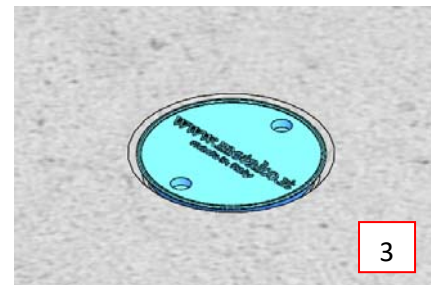
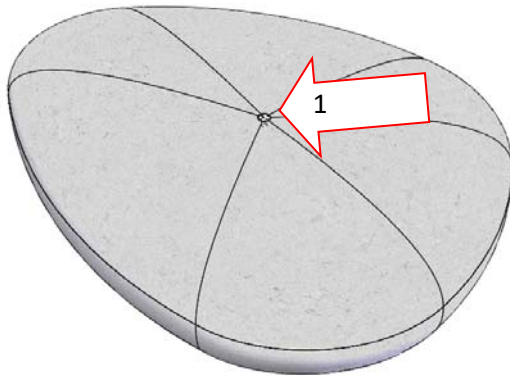
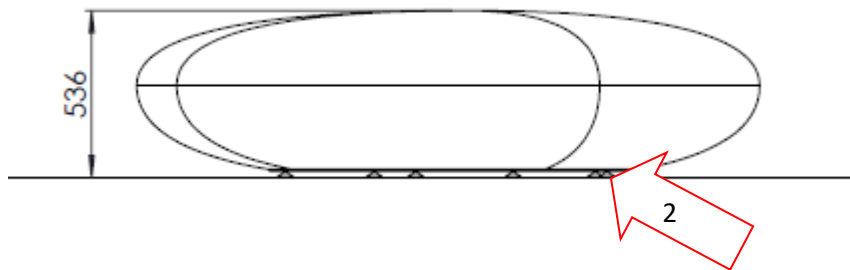
As a standard, the surfaces are treated with special "Anti-deterioration" products, which increase the product's life and resistance characteristics to rain erosion, mold and similar events.

On request, and at an additional cost, an "Anti-graffiti" treatment is available which permits the removal of vandalism carried out with different types of sprays and permanent markers.

Generally, UHPC products come equipped with bushings embedded in the stone, suitable for eyebolts to facilitate with the handling and installation.

It is very important to follow the manufacturer's "**Care and Maintenance**" guide to retain your product's warranty. In case of any doubt about the proper maintenance procedure, please contact id created, Inc. for support.





1. When handling the benches, fix the eyebolts to the threaded bushes (1).
2. Place the bench onto the floor and check the regulation of the feet (2).
3. Remove the eyebolts and fix cover plates (3) to the threaded bushes, sealing them with silicon.

If you need to fix it to the ground, the following tools are required:

1. Jackhammer
2. Nr. 4 / 6 M10 threaded rods
3. quick-setting chemical concrete

- 1) Find the installation area. Check that there are no sub-services. Make sure that the ground is leveled and solid enough (concrete, asphalt, stone or porphyry are all suitable materials).
- 2) Remove the feet and fasten the threaded rods to bench.
- 3) Mark the holes corresponding to the rods and drill the floor with diameter 20 mm, 250 mm min. deep.
- 4) Position the bench.
- 5) Proceed with fixing with mortar / chemical concrete.